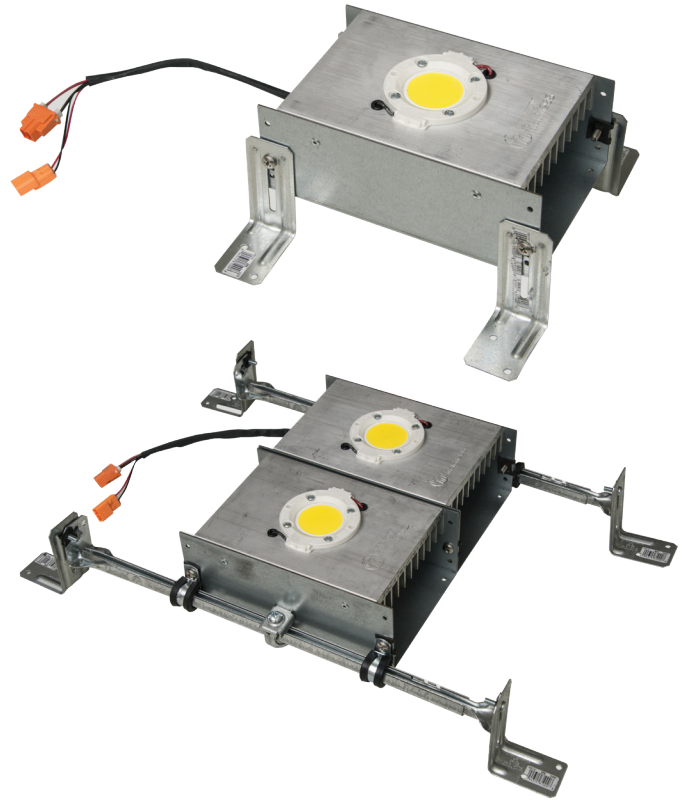


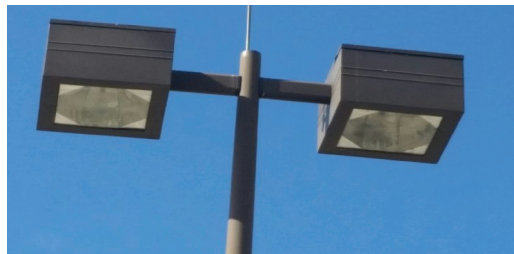
Energy Harness® LED Lighting Retrofit Kits are designed to replace existing Metal Halide and High Pressure Sodium lighting with energy saving and long lasting LED technology. Only the internal lighting components of a fixture are replaced, saving additional waste and expenses by reusing the existing fixtures.

Great for parking lots, gyms, warehouses, wall packs, and many other applications.

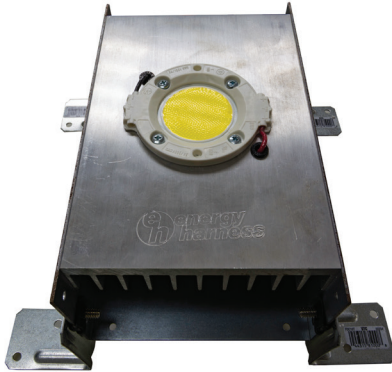


Energy Harness® LED Retrofit Kits utilize industry-leading COB technology to provide high quality light output. With the kit's durable construction, specially designed heatsink, active cooling technology, efficient heat dissipation, and built in surge protection, these lights have proved to last throughout the years. The versatile mounting options allow the user to mount into almost any fixture!

#### Product Replacements



## Specifications



- CRI>80
- Beam angle > 120°
- Power Factor >0.9
- In-fixture use only
- Aluminum/ steel housing
- Working Temp:  
-20°C - 45°C
- Efficacy: 152lm +/- 5lm
- 0-10V Dimmable upon request
- 20kv surge protection

Kit:	45W	60W	90W	90W
EHC Part Number	EHK-04550K-120-277V	EHK-06050K-120-277V	EHK-09050K-120-277V	EHK-09050K-200-528V
Replacement	100-125W	150-180W	250-400W	250-400W
Wattage	45W	60W	90W	90W
Lumens	6840lm	9120lm	13680lm	13680lm
SIZE (L x W)	7" x 4.25"	7" x 4.25"	7" x 4.25"	7" x 4.25"
Voltage	100-277VAC	100-277VAC	100-277VAC	200-528VAC
Kit:	150W	150W	300W	300W
EHC Part Number	EHK058-15050K-120-277V	EHK058-15050K-200-528V	EHK058-30050K-120-277V	EHK058-30050K-200-528V
Replacement	400-600W	400-600W	600-1000W	600-1000W
Wattage	150W	150W	300W	300W
Lumens	21900lm	21900lm	43800lm	43800lm
Size (L x W)	7" x 4.25"	7" x 4.25"	7" x 8.5"	7" x 8.5"
Voltage	100-277VAC	200-528VAC	100-277VAC	200-528VAC